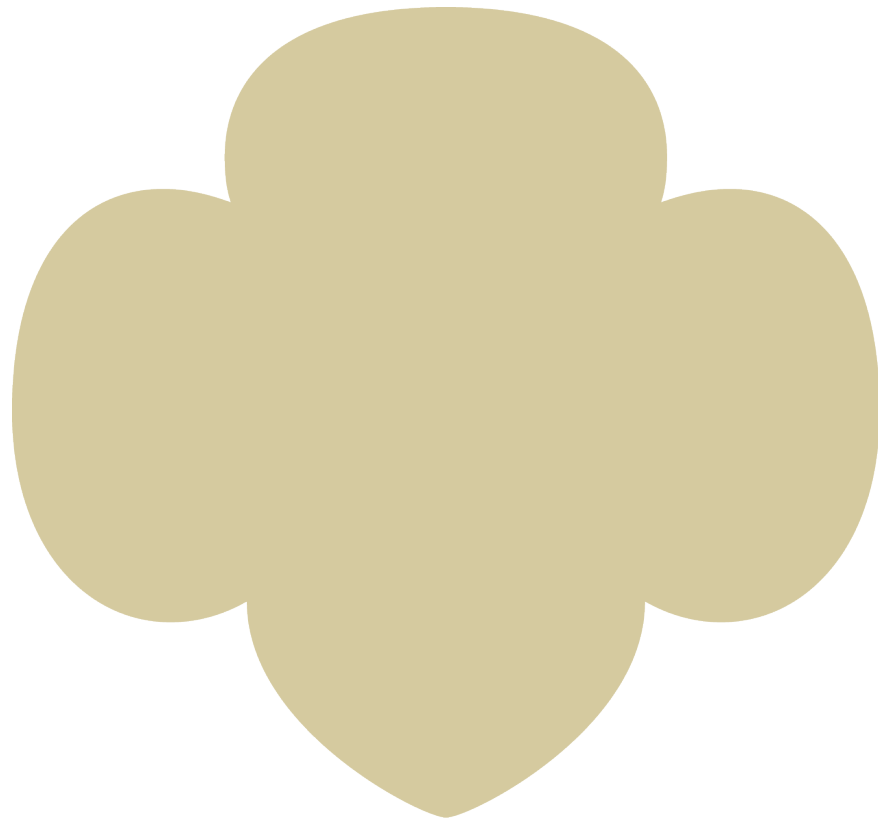


**girl scouts**   
of middle tennessee

# Field Trip Guide

2023-2024 Edition



## Why Field Trips?

- Field trips are a great way to change things up! Field trips can provide troops with the opportunity to explore their community, work towards a badge, learn something new, and simply have fun.
- Girl Scouts is its most magical and impactful when it is Girl-led, including field trips! Include your girls as much as is age appropriate when planning troop field trips. They can choose the place, create the budget, and make goals for what the field trip could accomplish. Empower your Girl Scouts to plan!



## Know Before You Go!

- Make sure you have [health history form](#) and [permission form](#) for each Girl Scout and adult volunteer and chaperone. Each participant must bring both forms to join the field trip.
- Check the Girl Scouts of Middle Tennessee Council's [Standard Safety Guidelines](#) and the [Safety Activity Checkpoints](#) that apply to your field trip.
  - Additional travel and safety resources are available on the [Troop Leader Resources page](#) of the Council's website.
- Field trips don't have to break the bank! This guide intentionally includes free and low-cost field trip options. Troops can also use troop funds to cover the cost of field trips. Troop funds can be earned during Fall Product and Cookie sales seasons or a money-raising project. Some helpful resources centered around troop funds are below:
  - **Funding the Fun** training available on [GSMIDTN's online training platform](#).
  - [Application for a money raising project](#)

## About This Document

- This guide is designed to make planning fun field trips for your troop as accessible as possible. The following list is far from exhaustive. We encourage you to use your creativity! We also recognize that life is full, so we created this resource to make field trip planning a few steps easier. **If you have additional ideas and suggestions, please email your ideas to [kwalker@gsmidtn.org](mailto:kwalker@gsmidtn.org).**
- This guide is organized by county regions within the Girl Scouts of Middle Tennessee Council's footprint. Here is a breakdown of regions and the counties they hold.

- Central – Davidson County
- Northeast – Sumner, Macon, Trousdale, Wilson, Smith, Dekalb, Jackson, Clay, Putnam, White, Cumberland, Overton, Pickett, Fentress
- Southeast – Rutherford, Cannon, Warren, Coffee, Bedford, Marshall, Moore, Lincoln, Franklin.
- Southwest – Williamson, Maury, Hickman, Perry, Wayne, Lewis, Lawrence, Giles
- Northwest – Stewart, Montgomery, Robertson, Houston, Dickson, Cheatham, Humphreys
- Within the regions, field trips are categorized in the same way as Girl Scout badges and patches with one extra “catch-all” category.
  - STEAM
  - Outdoors
  - Life Skills
  - Entrepreneurship
  - Just for Fun
- Search for field trip ideas in whatever area you choose! If traveling is possible for your troop, go as far and wide as you please.
- Keep travel and outdoor progressions for Girl Scouts in mind. [The Travel Progression guide](#) covers the progression of distance and nights away from home. The [Outdoor Progression guide](#) covers the progression of outdoor adventure and camping for Girl Scouts.
- GSMIDTN’s website is another great resource for planning a field trip with your troop! The [community opportunities page](#) lists our current list of community partners. Each partner offers either badge programs, workshops, or fun events. We also encourage Troop leaders to regularly check [the GSMIDTN event calendar](#)! Council posts upcoming Council events and community opportunities on the event calendar with instructions on how to sign up and who to contact with questions. It’s a great resource!

## Pricing Guide

[\$0] – Free

[\$] – Up to \$10 per participant

[\$\$] – Up to \$25 per participant

[\$\$\$] – \$25 and up per participant

[?] – Price dependent on programming/call before you plan.

# Central Region

## Davidson

### STEAM

- [Nashville Children's Theatre](#)
  - [?]
  - Nashville Children's Theatre offers a yearly council-sponsored program, as well as discounted tickets and private workshops for Girl Scout troops, which are booked directly with NCT by calling 615-254-9103.
- [Nashville Opera](#)
  - [?]
  - Nashville Opera offers council-sponsored programs and free performances throughout the year.
- [Bach to Rock Nashville West](#)
  - [\$\$-\$\$\$]
  - Bach to Rock in Nashville West offers regular monthly workshops for Girl Scouts, as well as optional classes for troops.
- [Nashville Ballet](#)
  - [?]
  - Nashville Ballet offers field trips and elementary, middle, and high school programs throughout the year.
- [Brushfire Pottery Studio](#)
  - [?] – Special pricing package for Girl Scouts. Cost per Girl Scout participant is \$5 studio pass + cost of pottery piece. Best to make reservation before painting day to ensure enough seats.
  - Paint your own pottery studio in the Green Hills area of Nashville. Spend an hour bringing pottery to life with paint. Pick up your finished piece in 7-10 days.
- [The Parthenon](#)
  - [\$] – Field trip rates and programming available.
  - The Parthenon Museum in Nashville's Centennial Park with exhibitions and art galleries about the ancient Greeks and their impact on American culture. Check the museum's event calendar for children's programming and events.
- [Frist Art Museum](#)
  - [\$0] – for children. [\$\$] – for adults.
  - Art museum in Nashville hosting rotating galleries and programming.
- [Engineering for Kids](#)
  - [?] – depending on programming chosen.



- Engineering children’s programming with curriculum focusing on robotics, coding, esports, Minecraft, and interactive engineering. Programs for Girl Scouts are available upon request. Located in Franklin, TN.
- [The Apple Store](#)
  - [\$0]
  - Visit the Apple store in downtown Nashville to learn about coding and some of Apple’s most popular apps, like Garage Band and ProCreate. You can go as part of badge requirements or simply to learn! They will accommodate both.

## Outdoor Adventure



- [Lucky Ladd Farms](#)
  - [\$\$] - Lower price for groups (minimum of 20 for a group)
  - An ag-venture farm fun park southeast of Nashville. Activities include a large petting zoo, agriculture educational activities, and seasonal attractions (pumpkin patch, corn maze, strawberry field, tulip fields).
  - Hosts “Scout Days” throughout the year with special admission for Girl Scouts and Boy Scouts.
  - Group discounts available.
- [Cheekwood Estate & Gardens](#)
  - [\$\$]
  - Gardens, Arboretum, and historic estate in southwest Nashville. The gardens host events on native plants and artistic exhibitions. The estate offers an art gallery and tours of the historic house.
- [Owl’s Hill Nature Sanctuary](#)
  - Group Programs (10 minimum participants) - \$150. Day Passes - \$5
  - Wildlife refuge in southwest Nashville. They have several trails for nature walks with affordable day passes.
  - They offer [programming for Girl Scouts](#) that are designed to fulfill badge requirements! The program participant minimum is 10 and the maximum is 20. This could be a fun way to two troops to field trip together and earn badges.
- [Shelby Bottoms Nature Center](#)
  - [\$0]
  - Nature center in East Nashville with trails and educational programming. They also offer Girl Scout specific programming! All of their programming and events are free to the public.
- [Nashville Zoo](#)
  - [\$\$]
  - Nashville Zoo offers scheduled badge workshops throughout the year: Daisy Eco Learner, Brownie Bugs, Junior Animal Habitats, and Cadette

Animal Helper. Sign up on the Zoo's website. Also offers Night Owl overnight experiences for troops.

- [The Adventure Park at Nashville](#)
  - [?] – Group discounts available for groups +10.
  - Zipline and adventure park next door to Warner Parks in southwest Nashville. Girl Scout outdoor and badge programming available upon request.

## Life Skills

- [WeGo Transit](#)
  - [?]
  - WeGo Transit in Nashville offers free workshops for Girl Scout troops to learn how to read a bus schedule, pay the fare, and feel confident using public transportation. You'll be accompanied by a Transit Navigator who will lead your workshop and excursion. Visit Nashville staples like the Frist Museum, Hattie B's Hot Chicken, or the Tennessee State Museum with ease! Call Metro Transit: 615-880-3597 to set up your troops workshop.

## Entrepreneurship

The goal of entrepreneurship badges and field trips is to educate Girl Scouts on business, financial literacy, innovation, and professional confidence. A broad range of field trips can accomplish this goal, which makes it difficult to place in a guide like this. Council encourages you to get to know businesses in your community and ask them to partner with your Girl Scout troop. Business can assist in meeting badge requirements, serve as an "expert", and provide an educational and fun field trip experience. The options are limitless!

## Just for Fun

- [Country Music Hall of Fame](#)
  - [\$\$-\$\$\$] - depending on program.
  - The Country Music Hall of Fame and Museum in Nashville provides fun learning experiences for Girl Scouts. Individual Girl Scouts and troops can visit in-person or virtually to earn a patch. The Museum also has a Girl Scout patch and suggested patch challenges for additional fun.
- [Kendra Scott](#)
  - [\$\$-\$\$\$]
  - Kendra Scott offers Color Bar parties, where attendees are able to design and purchase a custom jewelry piece at a discount. Your Color Bar

experience will be led by a Kendra Scott team member, who can share information about the jewelry pieces and Girl Scouts can receive their Jeweler Badge. Please allow four weeks to confirm date and location availability (Hill Center or Fifth + Broadway). Contact [Kaylee Franzen](#) to set up your troop's Color Bar party.

- [Nashville Goat Yoga](#)
  - [\$\$\$]
  - Nashville Goat Yoga offers goat yoga and equine time workshops for Girl Scout troops. Earn a special fun patch in a peaceful and picturesque setting in Springfield, Tennessee. Call (615)924-9830 to schedule your workshop.
- [The Crag Climbing Gym](#)
  - [?] – special pricing for Girl Scout troops
  - Rocking climbing gym in Nashville with special programming for Girl Scouts. They offer group rates, belaying lessons, and gear rentals.
- [Lane Motor Museum](#)
  - [\$-\$\$] - Lower prices for groups of 15+ participants available.
  - Visit 150 unique cars and motorcycles in East Nashville. Lane Motor Museum hosts the largest collection of European vehicles in the United States, as well as one-of-a-kind motorcycles and vehicles from around the world.
- [Tennessee State Museum](#)
  - [\$0] – free admission. Free parking on the weekends. Check website for parking lot locations.
  - Museum in downtown Nashville all about Tennessee history. Earn the [Council's Tennessee State Museum patch](#) during your visit!
- [National Museum of African American Music](#)
  - [\$\$-\$\$\$]
  - The only museum dedicated to preserving and celebrating the many music genres created and influenced by African Americans. Located in downtown Nashville.
- [Madame Tussauds Wax Museum](#)
  - [\$-\$\$] - Group tickets available for a minimum of 10 participants. Tickets often on sale. Check website.
  - Museum in Nashville hosting wax figures of Nashville and music legends.

## Northeast Region

*Sumner, Macon, Trousdale, Wilson, Smith, Dekalb, Jackson, Clay, Putnam, White, Cumberland, Overton, Pickett, Fentress*

### STEAM

- [Cookeville Children's Theatre](#)
  - [?]
  - Children's theatre in Cookeville, TN. They host a large production once or twice a year, and they offer summer programming and classes.
- [Appalachian Center for Craft](#)
  - [\$0-?] – depending on event or workshop.
  - Run by Tennessee Tech's school of art and design, the Appalachian Center for Craft is a gallery and arts center in Smithville. Their gallery is open to the public, and they host special events and festivals throughout the year.
- [The Art Jam CKVL](#)
  - [\$\$-\$\$\$] – price per participant is determined by class style and canvas size.
  - Group painting classes in Cookeville, TN.
- [Bryan Symphony Orchestra](#)
  - [\$-\$\$\$] - \$10 student tickets. \$40 adult tickets.
  - Symphony performances throughout the year hosted at Tennessee Tech in Cookeville.
- [Cumberland County Playhouse](#)
  - [\$\$-\$\$\$] – ticket prices vary for children and adults.
  - The local theatre in Cookeville hosting plays, musicals, and concerts throughout the year.



### Outdoor Adventure

- [Cedars of Lebanon State Park](#)
  - [?] – Camp site reservation fees and program fees for some events.
  - A free state park in Lebanon, TN that offers hiking trails, camping, horseback riding, an educational farm, and splash pad in the warmer months.
- [Bledsoe Creek State Park](#)
  - [\$0-?]
  - A free state park in Gallatin, TN offering guided kayaking tours, hiking, camping, and educational programming upon request.
- [Cummins Falls State Park](#)
  - [\$0-\$] – some trails require the purchase of a hiking permit.



- A state park in Cookeville with hiking trails to waterfalls, fishing, and picnic areas. Educational programs available upon request.
- [Burgess Falls State Park](#)
  - [\$0]
  - A state park in Sparta with hiking trails to waterfalls, fishing, birding, and picnic areas. Educational programs available upon request.
- [Falls Creek Falls State Park](#)
  - [\$0-?] – depending on chosen programming.
  - One of Tennessee’s largest state parks is located in Spencer, TN. The park is home to several activities, including hiking, rock climbing, a canopy challenge course, boating, swimming, and more. Cabin and campsite rentals are also available. Educational programming available upon request and reservation.
- [Pickett CCC Memorial State Park](#)
  - [\$0-?] – depending on programming and rentals. Hiking trails and swimming are free.
  - State park in Jamestown, TN that offers hiking trails, swimming, boat rentals, dark sky viewing, and educational programming. Cabin and campsite rentals are also available.
- [Standing Stone State Park](#)
  - [\$0-?] – depending on programming and rentals. Hiking trails are free.
  - State park in Hilham, TN that offers hiking trails, swimming, boating, fishing, and educational programs. Campsite and cabin rentals also available.
- [Cordell Hull Birthplace State Park](#)
  - [\$0-?] – most activities are free, including caving permits. Call ahead about educational programming.
  - Museum and state park in Byrdstown surrounds the birthplace of Cordell Hull, Tennessee Senator and FDR’s Secretary of State. The park offers several educational programming options, caving, and hiking.



## Life Skills

- [Imagine Foundry](#)
  - [\$-?] – depending on the class or workshop chosen.
  - Located in Cookeville, TN, the Imagine Foundry hosts workshops and classes on all things DIY. Take your troop to learn how to use a sewing machine, decorate cookies, woodworking, and more!
- [Bottom View Farm](#)

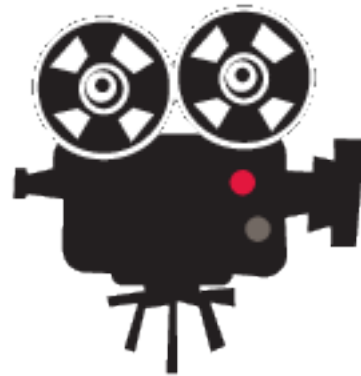
- [?-\$] - \$10 daily admission. Call ahead for group reservations.
- A working family farm in Portland. They offer special events and “day on the farm” tours upon advanced request.

## Entrepreneurship

The goal of entrepreneurship badges and field trips is to educate Girl Scouts on business, financial literacy, innovation, and professional confidence. A broad range of field trips can accomplish this goal, which makes it difficult to place in a guide like this. Council encourages you to get to know businesses in your community and ask them to partner with your Girl Scout troop. Business can assist in meeting badge requirements, serve as an “expert”, and provide an educational and fun field trip experience. The options are limitless!

## Just for Fun

- [Cookeville Depot Museum](#)
  - [\$0] – They ask that groups larger than 10 call ahead.
  - The Cookeville Depot Museum is a train artifact museum that includes a steam engine, track cars, and caboose, as well as exhibits on the history of Cookeville. A small, sweet museum in the middle of historic west Cookeville.
- [Sparta Drive-in Movie Theatre](#)
  - [\$\$-\$] - \$9 per person + concessions if desired.
  - Drive-in movie theatre in Sparta, TN. Double feature each night. Showtime starts at dusk. Robust concession menu. Radio rentals available. Check the website for dates and movies.
- [Woodland Gallery Pottery Studio](#)
  - [?]
  - Pottery studio and gallery in Hendersonville that offers pottery wheel and bowl building classes.



## Southeast

*Rutherford, Cannon, Warren, Coffee, Bedford, Marshall, Moore, Lincoln, Franklin*

### STEAM

- [Discovery Center](#)
  - [\$\$-?] - \$12 daily admission tickets. Special programming for scouts available upon request.
  - Children's science museum in Murfreesboro hosting exhibits on science, nature play, agriculture, and more. Special Girl Scout programs are available upon request to meet various badge requirements.
- [Earth Experience](#)
  - [\$] - \$9 daily admission for adults and older children. Group rates for special tours start at \$7 per participant.
  - Natural history museum in Murfreesboro focusing on archeology with samples from Tennessee and around the world. You can snap a photo with the T-Rex skeleton!
- [Hands-on Science Center](#)
  - [\$] – group rates available.
  - Science museum and education center in Tullahoma that emphasizes creating exhibits for hands-on learning. They also offer virtual classroom programs.

### Outdoor Adventure

- [Lucky Ladd Farms](#)
  - [\$\$-\$\$\$\$] - Lower price for groups (minimum of 20 for a group)
  - An ag-venture farm fun park southeast of Nashville. Activities include a large petting zoo, agriculture educational activities, and seasonal attractions (pumpkin patch, corn maze, strawberry field, tulip fields).
  - Hosts "Scout Days" throughout the year with special admission for Girl Scouts and Boy Scouts.
  - Group discounts available.
- [Barfield Wilderness Station](#)
  - [\$0-?] - depending on programming. Programs and reservations are very affordable.
  - Nature center in Murfreesboro offering nature education programming, nature trails, and campgrounds.
- [Henry Horton State Park](#)
  - [?] - depending on programming. Programs and reservations are very affordable.

- Hiking trails, camping, disc golf, fishing, and a reservable educational room in Chapel Hill, TN.
- [Rock Island State Park](#)
  - [?] - depending on programming. Programs and reservations are very affordable.
  - A free state park in Rock Island, TN offering swimming, a boat ramp, camping, hiking, and requestable educational programs.
- [Old Stone Fort Archeological State Park](#)
  - [?] - depending on programming. Programs and reservations are very affordable.
  - Free state park in Manchester, TN offering hiking and educational programs upon request.
- [Tims Ford State Park](#)
  - [?] - depending on programming. Programs and reservations are very affordable.
  - A free state park in Winchester, TN offering hiking, educational programs.
- [Cumberland Caverns](#)
  - [?] – pricing dependent on program and group size.
  - Cave tours, spelunking, mining, hiking trails, and picnic areas in McMinnville. Explore caves and mountain history with your troop with chosen programming.
- [Smyrna Outdoor Adventure Center](#)
  - [\$] – Field trip pricing available.
  - Indoor facility in Smyrna hosting children’s nature exhibit, climbing walls, cargo-net climbing structure, and more.
- [South Cumberland State Park](#)
  - [?] – most activities free, including caving permits. Call ahead for educational programming.
  - State park in Monteagle, TN that offers hiking, caving, swimming, beautiful picnic pavilions, and educational programs. Camp sites available as well.



## Life Skills

- [The Curious Kitchen](#)
  - [?]
  - Cooking school in Murfreesboro. They host cooking classes for all ages throughout the year. Group classes and kid classes available.

## Entrepreneurship

The goal of entrepreneurship badges and field trips is to educate Girl Scouts on business, financial literacy, innovation, and professional confidence. A broad range of field trips can accomplish this goal, which makes it difficult to place in a guide like this. Council encourages you to get to know businesses in your community and ask them to partner with your Girl Scout troop. Business can assist in meeting badge requirements, serve as an “expert”, and provide an educational and fun field trip experience. The options are limitless!

## Just for Fun

- [Beechcraft Heritage Museum](#)
  - [\$]
  - Aviation museum located in Tullahoma, right beside the Tullahoma Regional airport. The museum features exhibits on planes, flight, and its history. Educational programming available upon request (for extra fee?).
- [Hi-way 50 Drive-in Theater](#)
  - [\$]
  - Drive in movie theater in Lewisburg, TN. Concession stand available. Double feature with the first movie beginning at dusk. Check their website for movie times.

## Southwest

*Williamson, Maury, Hickman, Perry, Wayne, Lewis, Lawrence, Giles*

### STEAM

- [aMuse'um Children's Museum](#)
  - [\$]
  - Interactive children's museum in downtown Columbia. Hands-on exhibits on grocery shopping, dentists, water and power, farming, and more. Better for younger troops.
- [Watershed Public Theatre](#)
  - [\$\$]
  - Live theatre in Columbia with shows and classes offered throughout the year. Check their website for shows, classes, and tickets.

### Outdoor Adventure

- [Owl's Hill Nature Sanctuary](#)
  - [?] depending on day pass or scouting program.
  - Wildlife refuge in southwest Nashville. They have several trails for nature walks with affordable day passes.
  - They offer [programming for Girl Scouts](#) that are designed to fulfill badge requirements! The program participant minimum is 10 and the maximum is 20. This could be a fun way for two troops to field trip together and earn badges.
- [Camp Holloway](#)
  - At Camp Holloway, girls can take part in a variety of outdoor adventures. Girls can experience archery, obstacle courses, rappelling and climbing towers, swimming, team adventure, and tree climbing. Reserve cabins or platform tents (depending on the season) for an overnight stay. Property and activity reservations can be made on Council Alignment.
- [David Crockett State Park](#)
  - [?]
  - State park in Lawrenceburg that offers hiking, bike trails, boat rentals, camping sites, and educational programs. Check pricing for educational programs and rentals.
- [Hope Botanical Gardens](#)
  - [\$]
  - Botanical Gardens in Leoma with hedge mazes, children's garden, a walking trail, and special events throughout the year.



- [Mousetail Landing State Park](#)
  - [?]
  - State park in Linden with hiking, swimming, camp sites, and educational programming upon request. Boat launches available, but no boat rentals.
- [Chickasaw Trace Park](#)
  - [\$0]
  - Hiking trails, picnic shelters, and boat ramp in Columbia.
- [Higher Pursuits](#)
  - [\$\$\$-?]
  - Canoe and kayak guided tours on the Duck River for all levels of paddlers. They have Girl Scout specific programming! They also offer primitive camping sites.

## Life Skills

- [Flour Power Cooking Studios](#)
  - [?]
  - Cooking school in Brentwood offering group, children, and teen cooking classes. Group packages available.
- [Cedar Creek Farms](#)
  - \$40 for a “family” tour. Maximum of 15 participants.
  - Family-run farm in Columbia that prioritizes a connection with food sources. Family tours are available upon request on their website. They also offer canning classes!

## Entrepreneurship

- Nissan Manufacturing Tour
  - [\$0]
  - See how Nissan cars are made in Smyrna! Free tours of the Nissan’s manufacturing warehouse are available Tuesdays and Thursdays at 10am and 1pm. To request a tour, call 615-459-1444 or email [nissansmyrnapublictours@nissan-usa.com](mailto:nissansmyrnapublictours@nissan-usa.com). Nissan officials recommend requesting a tour at least four weeks in advance.

## Just for Fun

- [Williams County Animal Center](#)
  - [?]
  - Animal shelter in Franklin that offers [Girl Scout programming](#) to meet animal badge requirements!
- [The Crag Climbing Gym](#)
  - [?] – special pricing for Girl Scout troops



- Rocking climbing gym in Franklin with special programming for Girl Scouts. They offer group rates, belaying lessons, and gear rentals.
- [Elephant Sanctuary Discovery Center](#)
  - [?]
  - Learn about elephants at the Elephant Sanctuary Discovery Center in downtown Hohenwald. The Discovery Center is the educational side of the Elephant Sanctuary in Tennessee, one of two elephant sanctuaries in North America. Group programming available upon request through the website. \*Note: this is an opportunity to learn about elephants. The Discovery Center does not take you to see the elephants in the sanctuary.



# Northwest

*Stewart, Montgomery, Robertson, Houston, Dickson, Cheatham, Humphreys*

## STEAM

- [Gateway STEM Center](#)
  - [\$0-?] - Some community events are free. Different programs have different pricing.
  - Gateway offers Individualized STEM programming for Girl Scout troops in Springfield, TN. Contact [Robert Dillard](#) to schedule a workshop.

## Outdoor Adventure

- [Camp Sycamore Hills](#)
  - Experience the great outdoors including archery, bluff rappelling, canoeing, cookouts, high ropes, horses, obstacle courses, team adventure, and tree climbing. Reserve cabins for an overnight stay. Make property and activity reservations on Council Alignment.
- [Gentry Farms](#)
  - [\$\$]
  - Family farm in Franklin with corn mazes, wagon ride, animals, games, wildflower meadow, putt-putt, and more.
- [Dunbar Cave State Park](#)
  - [?] – hiking is free. Cave tours have a fee.
  - A state park in Clarksville provides cave tours, hiking, educational programming, and nature scavenger hunt checklists. Each cave tour is a different price per participant.
- [Montgomery Bell State Park](#)
  - [?] – Free hiking. Boat and camping rentals available.
  - A state park in Burns that offers hiking, paddling with boat rentals, swimming, and camp site rentals. Educational programming available upon request.
- [Edgar Ervins State Park](#)
  - [?] Free hiking. Boat rentals.
  - A state park on the lake in Silver Point, TN. They have hiking trails, boat ramps, and educational programming available upon request.
- [Land Between the Lakes National Recreation Area](#)
  - [?] – dependent on activities selected.
  - So much to see and do in Land Between the Lakes! Drive through the elk and bison prairie, go to space in the planetarium, visit a working historic



farm, learn about animals at the nature station, and more. Many programming options for groups, on top of hiking, swimming, birding, camping, and boating.

## **Life Skills**

- [Navy Federal Credit Union](#)
  - [?]
  - Navy Federal Credit Union offers badge workshops for troops: Daisy Making Choices, Brownie Money Manager, Junior Savvy Shopper, Cadette Budgeting, Senior Financing My Future, and Ambassador Good Credit and On My Own. Contact [Sarah Morton](#) for more information.
- [Shade Tree Farm and Orchard](#)
  - [\$]
  - Apple orchard and tree farm in Adams, TN. Plan a field trip with your troop and learn about apples, how to make cider, tour the farm, and make art during a day at the farm.

## **Entrepreneurship**

The goal of entrepreneurship badges and field trips is to educate Girl Scouts on business, financial literacy, innovation, and professional confidence. A broad range of field trips can accomplish this goal, which makes it difficult to place in a guide like this. Council encourages you to get to know businesses in your community and ask them to partner with your Girl Scout troop. Business can assist in meeting badge requirements, serve as an “expert”, and provide an educational and fun field trip experience. The options are limitless!

## **Just for Fun**

- [Clarksville Regional Airport](#)
  - [?] – call ahead about programming cost.
  - Clarksville Regional Airport encourages aviation learning at all ages, and they offer tours and educational programs. Request a tour or program through their website.
- [Honeysuckle Hill Farm](#)
  - [\$\$]
  - Farm adventure park in Springfield with attractions like a corn maze, rock wall, pig races, hands-on farming exhibits, and more.